

Two Way FRR – Double Timber Frame MARCH 2006

SPEC No.	LOADBEARING CAPACITY	STC	RW	FIRE RESISTANCE RATING	LINING REQUIREMENTS
GBT(L)A 30b	LB	58	57	(30)/30/30	Side 1: 1 x 10mm GIB Noiseline® Side 2: 2 x 10mm GIB Noiseline®

FRAMING

Framing to comply with:

- NZBC B1 – Structure: AS1 Clause 3 – Timber (NZS 3604) or VM1 Clause 6 – Timber (NZS 3603)
- NZBC B2 – Durability: AS1 Clause 3.2 – Timber (NZ 3602)
- Studs at 600mm centres maximum
- Nogs at 1350mm centres maximum.

Framing dimensions and height as determined by NZS 3604 stud and top plate tables for loadbearing walls.

SOUND CONTROL INFILL

R1.8 (75mm) Pink® Batts® glasswool insulation installed between the studs and nogs on one side of the double frame.

LINING

SIDE 1: 1 layer of 10mm GIB Noiseline® fixed vertically.
SIDE 2: 2 layers of 10mm GIB Noiseline® fixed vertically.
Vertical joints of the outer layer are offset 600mm from those of the inner layer. Use full height sheets where possible. Sheet joints are touch fitted and must occur over framing. Where sheet end joints are unavoidable they must be over nogs and outer layer joints offset from those on the inner layer.

ACOUSTIC SEALANT

A bead of GIB Soundseal® acoustic sealant is required around the perimeter of the inner lining or framing, the outer lining is then bedded onto the bead.

FASTENING THE LINING

Fasteners

INNER or SINGLE LAYER: 25mm x 6g GIB® Grabber® High Thread Drywall Screws or 30mm x 2.8mm GIB® Nails.

OUTER LAYER: 41mm x 6g screws as above or 40mm x 2.8mm GIB® Nails.

Fastener Centres

INNER LAYER and OUTER LAYER: 300mm centres around sheet perimeter and 300mm to intermediate studs.

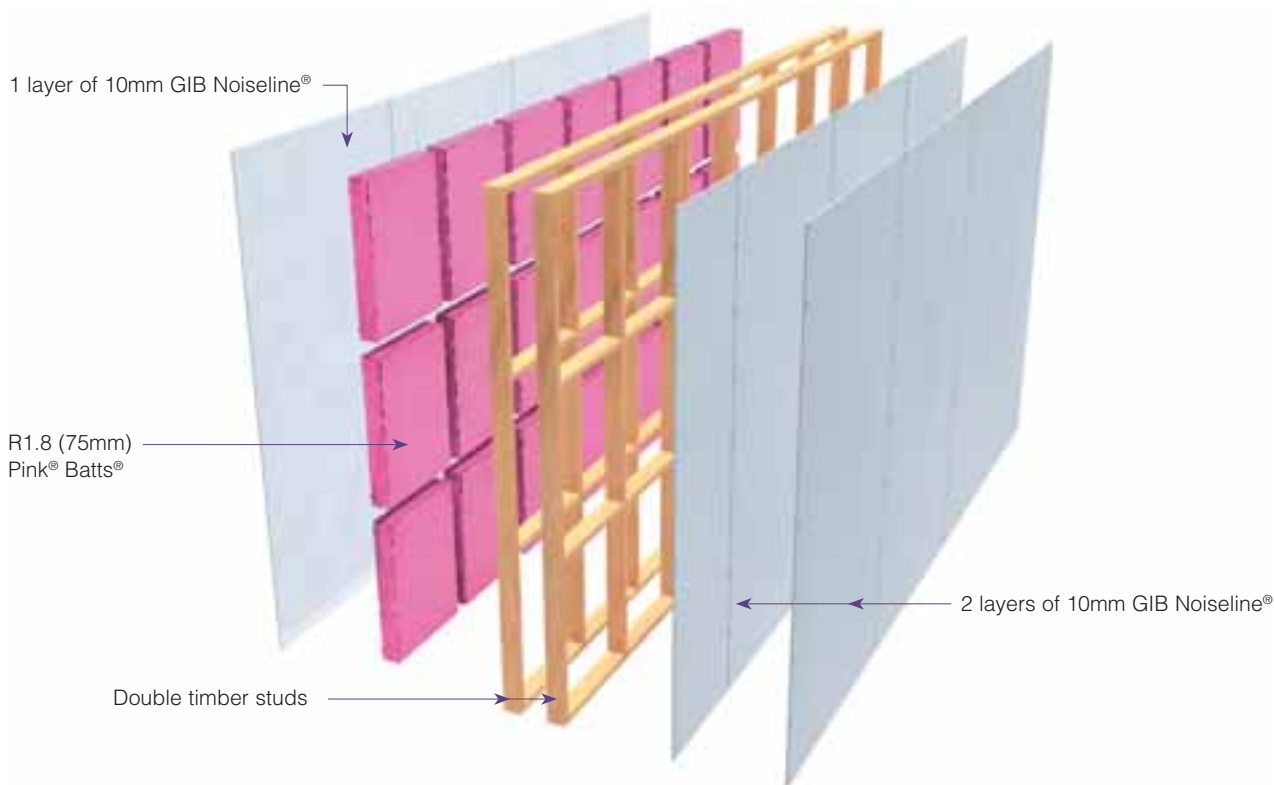
Place fasteners 12mm from sheet edges.

JOINTING

INNER LAYER: Unstopped.

OUTER LAYER: All fastener heads stopped and all sheet joints tape reinforced and stopped in accordance with the publication entitled “GIB® Site Guide”. Wall to ceiling junctions are to be reinforced with paper tape and square stopped or finished with GIB-Cove®.

STUD SIZE	SPACE BETWEEN FRAMES	PARTITION WIDTH
70mm	65mm min	235mm
90mm	25mm min	235mm



In order for GIB® systems to perform as tested, all components must be installed exactly as prescribed. Substituting components produces an entirely different system and may seriously compromise performance. Follow system specifications.